

PHIFER

SheerWeave

a whisper of light and color

INFINITY

STYLE 1000

STYLE 2000/2100

STYLE 2390/2360/2410/2500

STYLE 2701/2703/2705/2710

STYLE 3000

STYLE 4000/4100/4400

STYLE 4500/4600

STYLE 4550/4650

STYLE 4800

STYLE 5000

STYLE 7000 BLACKOUT

STYLE 7100 BLACKOUT

SheerWeave®

Interior Sun Control Fabrics

function...

Natural light can be a beautiful design element with a little sun management. Elegantly managing the sun's heat and glare can be accomplished with Phifer's SheerWeave interior sun control fabrics. SheerWeave's light-filtering qualities diffuse light, reduce glare and help control solar heat gain to make any room a more comfortable environment. As SheerWeave filters and diffuses light, it also helps reduce the fading of textiles and interior furnishings. SheerWeave fabrics provide energy-efficient solutions by reducing the amount of solar heat gain. While lighter color fabrics reflect light and illuminate the interior with just the right amount of light, darker fabrics provide a superb view to the outside and absorb light making them ideal for viewing computer and television screens.

The openness of a fabric refers to the weave or mesh structure and determines the amount of heat and light that enters a room. A more open fabric allows more heat and light to penetrate through, while tighter meshes block more heat and light. SheerWeave fabrics are offered in a variety of openness factors to allow optimal light in commercial buildings or provide more privacy for such applications as hospitals and doctors offices.

aesthetics...

With a whisper of light and color, SheerWeave fabrics are the perfect complement to any interior decor. The simple yet beautiful weaves of SheerWeave fabrics add a rich, subtle texture without taking away from the overall interior design scheme. Simple, clean and classic, the aesthetic quality of SheerWeave allows it to be used in combination with other draperies and window coverings. Are large windows in your architectural design? SheerWeave is available in wide widths to cover large window openings.

Phifer's exciting palette of styles, patterns, colors and weaves can provide you with the tools you need to create the perfect look for your next window covering project. If one of the Phifer stock lines does not work with your interior design, use our Special Weave Program to create one that will. From restaurants and offices to hotels and homes, Phifer SheerWeave has been used in residential and commercial spaces worldwide. SheerWeave fabrics provide the perfect balance of light, comfort and beauty making them the ideal window covering solution.

quality...

Phifer's quality standards are among the highest in the world. SheerWeave fabrics are manufactured in a state-of-the-art facility in Tuscaloosa, Alabama USA under strict guidelines through ISO certified production processes. From yarn coating to packaging, every step of the production process is checked to ensure only the finest quality fabrics are given the Phifer name.

SheerWeave fabrics are as durable as they are beautiful to handle high-traffic applications with ease. Independent laboratory testing found SheerWeave fabrics to meet or exceed flame retardancy and bacteria/fungal resistancy requirements. These fabrics are easy to maintain, as they require only occasional cleaning using a mild detergent, brushing and rinsing.

NEW!
SheerWeave
INFINITY™
SUSTAINABLE FABRIC



AVERAGE OPENNESS 3% / 5%

SheerWeave Infinity is an eco-friendly full basketweave. Emulating the look and engineering of standard SheerWeave fabrics, Infinity core yarn and coating is PVC-free and 100% recyclable.

Standard Widths: 63", 84" and 98"
(160.0 cm, 213.4 cm and 248.9 cm)

Fire Classification: NFPA 701-2004 TM# 1 (small scale)

Bacteria and Fungal Resistance: ASTM E 2180

Environmental Certification: GREENGUARD Certified and GREENGUARD for Children and Schools Certified

Lead Free: RoHS / Directive 2002/95/EC, US Consumer Product Safety Commission Section 101 and ANSI/WCMA A100.1-2007 for lead content

Standard colors available in SheerWeave Infinity (3% and 5%)



PG1 Cotton



PG2 Almond



PG3 Wheat



PG4 Stone



QG1 Barley



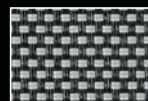
VG1 Nickel



VG2 Midnight



VG3 Bark



VG4 Slate

Photo below courtesy of Rielamericano. Buenos Aires, Argentina.



SheerWeave® STYLE 1000

AVERAGE OPENNESS 25%

This ribbed weave vinyl-coated fiberglass fabric offers substantial shading while allowing excellent outward visibility and improved daytime.

Standard Widths: 36", 48", 60", 72", and 84"
(91.4 cm, 121.9 cm, 152.4 cm, 182.9 cm and 213.4 cm)

Fire Classification: California U.S. Title 19 (small scale), NFPA 701-2004 TM# 1 (small scale), NFPA 101 (Class A Rating), UBC (Class I), British Standard 5867 and NFPA 701 TM#2 Large Scale

Bacteria and Fungal Resistance: ASTM E 2180

Lead Free: RoHS / Directive 2002/95/EC, US Consumer Product Safety Commission Section 101 and ANSI/WCMA A100.1-2007 for lead content

Standard colors available in Style 1000



P02 White



P03 Antique White

Photo courtesy of UNIFLEX Window Fashions. SheerWeave Style 1000.
Fabricator: UNIFLEX. Installer: B2. Photographer: Tuca Reines. Sao Paulo, Brazil.

reduces glare



SheerWeave® STYLE 2000/2100



AVERAGE OPENNESS 5% / 10%

Made of vinyl-coated fiberglass yarns, Styles 2000 and 2100 are full basketweaves designed expressly for those applications which require a more opaque and non-directional fabric. Styles 2000 and 2100 are ideal fabrics for use in roll-up shades, Roman shades and vertical blinds. Styles 2000 and 2100 in Q10 Bronze, V21 Charcoal and V24 Charcoal/Chestnut can also be used in exterior roller shades.

Standard Widths: 3.5", 72" and 96" (8.89 cm, 182.9 cm and 243.8 cm); 126" (320 cm) available in Style 2000 in P02, P04, P05, Q05, Q06 and Q10

For 3.5" width - Rolls are 25 linear yards (22.86 M) in length, individually wrapped and packed five rolls per carton.

Fire Classification: California U.S. Title 19 (small scale), NFPA 701-2004 TM# 1 (small scale), NFPA 101 (Class A Rating), UBC (Class I), British Standard 5867 and NFPA 701 TM#2 Large Scale

Bacteria and Fungal Resistance: ASTM E 2180

Environmental Certification: GREENGUARD Certified and GREENGUARD for Children and Schools Certified

Lead Free: RoHS / Directive 2002/95/EC, US Consumer Product Safety Commission Section 101 and ANSI/WCMA A100.1-2007 for lead content

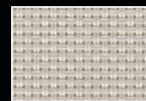
Standard colors available in Styles 2000 (5%) and 2100 (10%)



P02 White



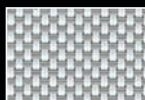
P04 White/Bone



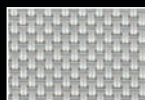
Q05 Bone



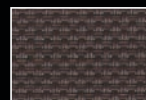
V04 Platinum



P05
White/Platinum



Q06
Bone/Platinum



Q10 Bronze



V21 Charcoal



V22
Charcoal/Gray



V24
Charcoal/Chestnut

Standard Roll Length for All Styles:

30 Linear Yards (27.4 M)

SheerWeave® STYLE



2390/2360/2410/2500

AVERAGE OPENNESS 5% / 10% / 3% / 1%

Manufactured with ease of fabrication in mind, Styles 2390, 2360, 2410 and 2500 are also full basketweaves designed expressly for those applications which require a more opaque and nondirectional fabric. Made of vinyl-coated fiberglass yarns, Styles 2390, 2360, 2410 and 2500 are ideal fabrics for use in roll-up shades, Roman shades and vertical blinds.

Standard Widths: 3.5", 63" and 98" (8.89 cm, 160.0 cm and 248.9 cm); 126" (320 cm) available in Styles 2390 and 2410 in P12, P13, P14, Q20, V22 and V24

For 3.5" width - Rolls are 25 linear yards (22.86 M) in length, individually wrapped and packed five rolls per carton.

Fire Classification: M1 (Style 2390), California U.S. Title 19 (small scale), NFPA 701-2004 TM#1 (small scale), NFPA 101 (Class A Rating), UBC (Class I), British Standard 5867 and NFPA 701 TM#2 Large Scale

Bacteria and Fungal Resistance: ASTM E 2180

Environmental Certification: GREENGUARD Certified and GREENGUARD for Children and Schools Certified

Lead Free: RoHS / Directive 2002/95/EC, US Consumer Product Safety Commission Section 101 and ANSI/WCMA A100.1-2007 for lead content

Standard colors available in Styles 2390 (5%), 2360 (10%), 2410 (3%) and 2500 (1%)



P12 Oyster



P13 Oyster/Beige



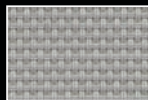
P14 Oyster/Pearl Gray



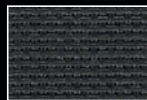
Q20 Beige



Q21 Beige/ Pearl Gray



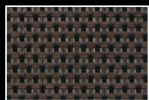
V20 Pearl Gray



V21 Charcoal



V22 Charcoal/Gray



V24 Charcoal/Chestnut



SheerWeave® STYLE



2701/2703/2705/2710

AVERAGE OPENNESS 1% / 3% / 5% / 10%

Styles 2701, 2703, 2705 and 2710 are woven from a unique twill pattern that displaces the individual yarns to create a two-sided fabric for maximum performance in heat reduction, glare reduction and improved visibility.

Standard Widths: 63" and 98" (160.0 cm and 248.9 cm)

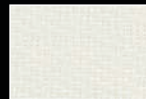
Fire Classification: M1 (Styles 2701, 2703 and 2705), California U.S. Title 19 (small scale), NFPA 701-2004 TM#1 (small scale), NFPA 101 (Class A Rating), UBC (Class I), British Standard 5867 and NFPA 701 TM#2 Large Scale

Bacteria and Fungal Resistance: ASTM E 2180

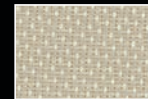
Environmental Certification: GREENGUARD Certified and GREENGUARD for Children and Schools Certified

Lead Free: RoHS / Directive 2002/95/EC, US Consumer Product Safety Commission Section 101 and ANSI/WCMA A100.1-2007 for lead content

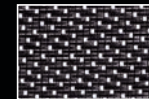
Standard colors available in Styles 2701 (1%), 2703 (3%), 2705 (5%) and 2710 (10%)



P12 Oyster



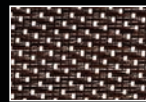
P13 Oyster/Beige



P28 Oyster/Charcoal



P91 Oyster/Pewter



P92 Oyster/Chestnut

Photo below courtesy of Draper, Inc.
SheerWeave Style 2000, White.
Carol Grotnes Belk Library, Appalachian State University, Boone, NC.
Motorized FlexShades controlled by IntelliFlex System, SGC4.
Architects: Pease Associates, Inc. (Charlotte, NC),
Shepley Bulfinch Richardson and Abbott (Boston, MA)
and McCracken & Lopez P.A. (Charlotte, NC).
Installer: Bonitz Contracting Company, Inc. (Concord, NC).
Photographer: Martin Fox Photography (Fairview, NC).

filters and diffuses light



SheerWeave® STYLE 3000

AVERAGE OPENNESS 14%

A combination of vinyl-coated fiberglass and polyester yarns, Style 3000 is an elegant and exquisite shading fabric. Available in 13 colors, Style 3000 is ideal for roller shades, Roman shades and other types of interior sun control applications.

Standard Widths: 72" and 96" (182.9 cm and 243.8 cm)

Fire Classification: NFPA 701-2004 TM#1 (small scale), NFPA 101 (Class A Rating), UBC (Class 1) and NFPA 701 TM#2 Large Scale

Bacteria and Fungal Resistance: ASTM E 2180

Lead Free: RoHS / Directive 2002/95/EC, US Consumer Product Safety Commission Section 101 and ANSI/WCMA A100.1-2007 for lead content

Standard colors available in Style 3000



P01 Pearl White



Q17 Sand Dollar



Q01 Mushroom Sand



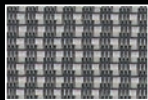
Q02 Custard Cream



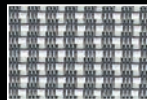
V01 Pale Grey



Q19 Honey Sage



V00 Dusty Grey



P00 Spanish Grey



V18 Mossy Green



V19 Harvest Wheat



Q18 Espresso



V02 Ninja Grey



Q04 Chocolate

Photo below courtesy of Solarfective Products, Limited. SheerWeave Style 4400, Pewter. BMW-Toronto, Canada.



SheerWeave® STYLE 4000/4100/4400

AVERAGE OPENNESS 5% / 10% / 3%

Made from vinyl-coated polyester yarns, Styles 4000, 4100 and 4400 are designed with today's demanding commercial market in mind and are available in 9 standard colors. Style 4000/4100/4400 can also be used in exterior roller shades.

Standard Widths: 3.5", 63", 84" and 98" (8.89 cm, 160.0 cm, 213.4 cm and 248.9 cm; 126" (320 cm) available in Styles 4000 and 4400 in P06, P07, P10, Q12, Q15, Q16 and V10

For 3.5" width - Rolls are 25 linear yards (22.86 M) in length, individually wrapped and packed five rolls per carton.

Fire Classification: California U.S. Title 19 (small scale), NFPA 701-2004 TM#1 (small scale), NFPA 101 (Class A Rating), UBC (Class I), British Standard 5867, NFPA 701 TM#2 Large Scale and CAN/ULC S109-M-87

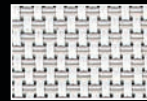
Bacteria and Fungal Resistance: ASTM E 2180

Lead Free: RoHS / Directive 2002/95/EC, US Consumer Product Safety Commission Section 101 and ANSI/WCMA A100.1-2007 for lead content

Standard colors available in Styles 4000 (5%), 4100 (10%) and 4400 (3%)



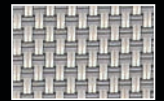
P06 Chalk



P07 Alabaster



Q12 Pebblestone



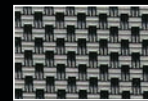
Q15 Greystone



P10 Granite



V07 Pewter



V15 Ash



V10 Ebony



Q16 Tobacco

Photo below courtesy of Castec, Inc. SheerWeave Style 4000, Ebony.

helps control solar heat gain



SheerWeave® STYLE 4500/4600

AVERAGE OPENNESS 5%/3%

Using advances in polyester yarn development, Styles 4500 and 4600 are thinner and lighter weight allowing for ease of fabrication. Both styles are full basketweaves, making them ideal for applications that require a more opaque and non-directional fabric. Style 4500/4600 can also be used in exterior roller shades.

Standard Widths: 63" and 98" (160.0 cm and 248.9 cm)

Fire Classification: California U.S. Title 19 (small scale), ASTM E 84 (Class 1), British Standard 5867 Type B, and NFPA 701 TM#1 Small Scale

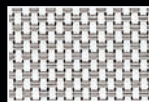
Bacteria and Fungal Resistance: ASTM E 2180

Lead Free: RoHS / Directive 2002/95/EC, US Consumer Product Safety Commission Section 101 and ANSI/WCMA A100.1-2007 for lead content

**Standard colors available in
Styles 4500 (5%) and 4600 (3%)**



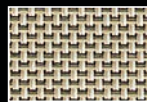
P06 Chalk



P10 Granite



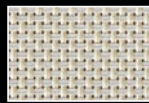
Q59 Ecu



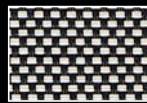
Q60
Golden Sand



V10 Ebony



V44 Sandstone



V46 Sable

SheerWeave® STYLE 4550/4650

AVERAGE OPENNESS 5%/3%

Using thin polyester yarns and a unique twill weave, Style 4550 and 4650 are easy to fabricate and offer a distinct two-sided appearance that maximizes both visibility and solar heat reduction. Style 4550/4650 can also be used in exterior roller shades.

Standard Widths: 63" and 98" (160.0 cm and 248.9 cm)

Fire Classification: California U.S. Title 19 (small scale), ASTM E 84 (Class 1), British Standard 5867 Type B, and NFPA 701 TM#1 Small Scale

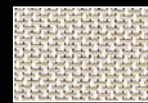
Bacteria and Fungal Resistance: ASTM E 2180

Lead Free: RoHS / Directive 2002/95/EC, US Consumer Product Safety Commission Section 101 and ANSI/WCMA A100.1-2007 for lead content

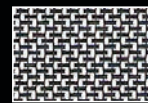
**Standard colors available in
Styles 4550 (5%) and 4650 (3%)**



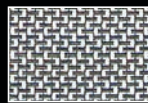
P10 Granite



P65 Linen



V45 Coal



V47 Chestnut

Photo below courtesy of UNIFLEX Window Fashions. Sao Paulo, Brazil.
Fabricator: UNIFLEX. Installer: B2. SheerWeave Style 4100.

helps protect interior furnishings



SheerWeave® STYLE 4800

AVERAGE OPENNESS 1%

Made of vinyl-coated polyester yarns, Style 4800 is designed with privacy in mind and offers maximum UV blockage.

Standard Widths: 63" and 96" (160.0 cm and 243.8 cm)

Fire Classification: California U.S. Title 19 (small scale), NFPA 701-2004 TM# 1 (small scale), NFPA 101 (Class A Rating), UBC (Class I), British Standard 5867, NFPA 701 TM#2 Large Scale and CAN/ULC S109-M-87

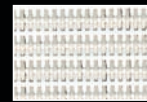
Bacteria and Fungal Resistance: ASTM E 2180

Lead Free: RoHS / Directive 2002/95/EC, US Consumer Product Safety Commission Section 101 and ANSI/WCMA A100.1-2007 for lead content

Standard colors available in Style 4800



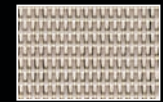
P06 Chalk



P07 Alabaster



P75 Pearl



Q97 Sand



Q98 Mocha



Q99 Taupe



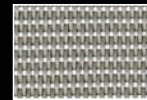
V10 Ebony



V16 Grey



V59 Fleece



V60 Clay



V61 Mink



V62 Flint

architectural manual...

A three-ring binder, with information on Phifer's complete line of both interior and exterior sun control products, is available to qualified specifiers, architects and interior design firms. Contact our Sun Control Marketing Department at 1/800-221-5497 to request your copy today.

Photo below courtesy of Rielamericano. Buenos Aires, Argentina.
SheerWeave Style 2000, Charcoal/Gray.

provides excellent outward visibility



SheerWeave® STYLE 5000

OPENNESS FACTORS VARY FROM 5-10%

Phifer's SheerWeave Style 5000 Jacquard line was inspired by nature and created to take the function of sun control fabrics to a whole new level. The collection of 16 different fabrics is woven with diverse textures and rich colors and maintains the qualities that SheerWeave fabrics are known for – unmatched durability, minimal maintenance and excellent outward visibility.

Standard Widths: 74" and 98" (187.96 cm and 248.9 cm)

Fire Classification: see swatch card for individual pattern results

Bacteria and Fungal Resistance: ASTM E 2180

Lead Free: RoHS / Directive 2002/95/EC, US Consumer Product Safety Commission Section 101 and ANSI/WCMA A100.1-2007 for lead content

Standard patterns available in Style 5000



P59 Bamboo/
Whitewash



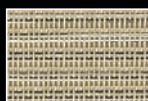
P60 Bamboo/
Birch



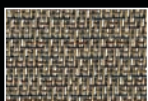
Q43 Marble/
Sand



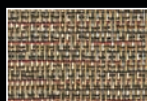
Q45 Moire/
Leather



Q46 Bamboo/
Wheat



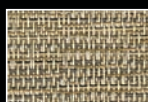
Q47 Moire/
Mocha



Q48 Bark/
Cedar



Q49 Rattan/
Umber



Q50 Bark/
Tiger Oak



Q51 Wicker/
Mushroom



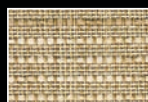
Q52 Marble/
Slate



Q53 Honeycomb/
Brown Sugar



Q93 Cane/
Golden Straw



Q94 Tweed/
Oatmeal



Q95 Tweed/
Buckeye



Q96 Thatch/
Wheatgrass

Printed samples above do not depict full depth and texture of jacquard patterns.
Fabric samples available upon request.

offers an array of unique textures



Photo above courtesy of Shades de México, dba Tecnoline. Guadalajara, México.

SheerWeave Style Style 5000. Rattan/Umber.



SheerWeave®



STYLE 7000 BLACKOUT FABRIC

AVERAGE OPENNESS 0%

Style 7000 is uniquely designed to provide total light blockage when complete room darkening is needed. With a broad range of decorator colors and the look and feel of cloth, Style 7000 will enhance the beauty and function of any room.

Standard Width: 94" (238.8 cm)

Fire Classification: California U.S. Title 19 (small scale), NFPA 701-2004 TM#1 (small scale) and British Standard 5867

Bacteria and Fungal Resistance: ASTM G21-96, AATCC 174-1998 Part II and III

Environmental Certification: GREENGUARD Certified and GREENGUARD for Children and Schools Certified

Lead Free: RoHS / Directive 2002/95/EC, US Consumer Product Safety Commission Section 101 and ANSI/WCMA A100.1-2007 for lead content

Standard colors available in Style 7000



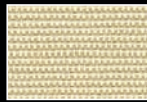
P62 White



P63 Birch



P64 Sand



Q57 Wheat



Q58 Mushroom



V39 Graphite



V40 Onyx



V41 Canyon

SheerWeave®

STYLE 7100 BLACKOUT FABRIC

AVERAGE OPENNESS 0%

Style 7100 is a laminated blackout fabric with Style 2000 as the face fabric. Style 7100 is ideal to use when a totally opaque fabric is required.

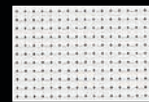
Standard Width: 72" (182.9 cm)

Fire Classification: California U.S. Title 19 (small scale), NFPA 701-2004 TM#1 (small scale), NFPA 101 (Class A Rating), UBC (Class 1), NFPA 701 TM#2 Large Scale and British Standard 5867

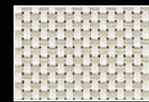
Bacteria and Fungal Resistance: ASTM E 2180

Lead Free: RoHS / Directive 2002/95/EC, US Consumer Product Safety Commission Section 101 and ANSI/WCMA A100.1-2007 for lead content

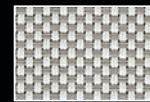
Standard colors available in Style 7100



P02 White



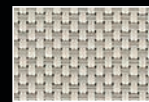
P04 White/Bone



P05
White/Platinum



Q05 Bone



Q06

Bone/Platinum



V21 Charcoal

Photo below courtesy of Rielamericano.
Buenos Aires, Argentina.
SheerWeave with Tecnoroll System.
Fabricator: Rielamericano.
Architect: Arostegui, Camblong y Falconi
Firm. Casa FOA - Gold Award Winner.



SHEERWEAVE IS IDEAL FOR USE IN:
ROLL-UP SHADES, ROMAN SHADES,
FOLDING SHADES, PLEATED SHADES,
VERTICAL BLINDS, PANEL TRACKS,
SHEERS AND SCREENS

Photo below courtesy of Shades de México, dba Tecnoline.
Guadalajara, México. SheerWeave Style 2000, White/Bone.





Photo above courtesy of Shades de México, dba TecnoLine, Guadalajara, México.
SheerWeave Style 2000, White/Bone.

Photo below courtesy of Draper, Inc. SheerWeave Style 2000, White.
Carol Grotnes Belk Library, Appalachian State University, Boone, NC.
Motorized FlexShades controlled by IntelliFlex System, SGC4.
Architects: Pease Associates, Inc. (Charlotte, NC), Shepley Bulfinch Richardson
and Abbott (Boston, MA) and McCracken & Lopez P.A. (Charlotte, NC).
Installer: Bonitz Contracting Company, Inc. (Concord, NC).
Photographer: Martin Fox Photography (Fairview, NC).



Photo below courtesy of Sun Glow Window Coverings Products of Canada Ltd.
SheerWeave Style 2410, Oyster.

PHIFER INCORPORATED is committed to balancing environmental stewardship with our corporate goals throughout the world.

Phifer's commitment to the environment dates back to the company's origins when our founder, Reese Phifer, envisioned a manufacturing facility that would bring a better standard of living to its community, advances in technology to its industry and innovative products to its customers. Today, Phifer is the world's leader in the manufacture and sales of energy saving fabrics for both the residential and commercial markets. Phifer has no less than 20 branded products that offer a broad range of options to reduce solar heat gain, preserve interior surfaces and materials, improve the quality of home and work environments and protect natural resources by conserving energy. Phifer's growth can be attributed to our solutions-oriented approach as we partner with individuals, businesses, the architectural and design communities and governmental agencies to achieve their own goals of energy conservation and environmental preservation.

As a manufacturer, Phifer is committed to minimizing the impact on the environment from our manufacturing processes and finished products. Through specified environmental objectives, policies and procedures, we ensure compliance with all local, state and federal regulatory requirements and surpass these requirements in many areas of waste management, employee awareness training and pollution prevention programs based on the measurement of our environmental performance.

In 2002 the Alabama Department of Environmental Management nominated Phifer for the Governor's Conservation Achievement Award, and the Alabama Wildlife Federation selected Phifer as the Air Conservationist of the Year. Phifer was the first manufacturer in our industry to achieve GREENGUARD certification. This rigorous evaluation of our interior shading fabrics is completely voluntary and ensures that the highest industry standards are being applied to maintain indoor air quality for the health and safety of building occupants.

At Phifer, environmental responsibility is part of our corporate culture. We are leaders. We are proactive. We do it because it is the right thing to do.



ISO Registered

P. O. Box 1700 • Tuscaloosa, Alabama 35403-1700 USA

Phone: 205/345-2120 • FAX 205/391-0799

Toll Free USA/Canada: 1/800-221-5497

www.phifer.com

Samples are available upon request

© PHIFER INCORPORATED, 2008

® SheerWeave is a registered trademark of PHIFER INCORPORATED.

™ SheerWeave Infinity is a trademark of PHIFER INCORPORATED.

Tuscaloosa, Alabama USA